

HSP

Recommended P.C.B Layout(Top Side)
(PCB BOARD TOLERANCE±0.05)

NOTES:

Current Rating: 1.0AMP
 Contact Resistance: 20mΩ max
 Withstand Voltage: 500V AC/DC
 Insulation Resistance: 1000MΩ min
 Operation Temperature: -40°C to +105°C

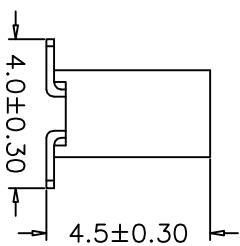
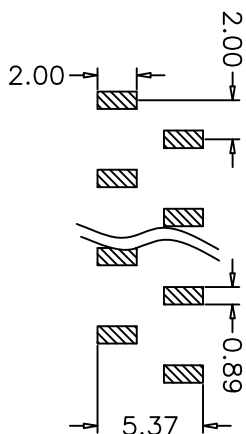
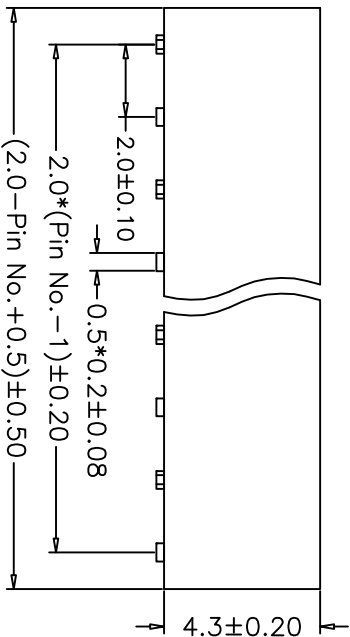
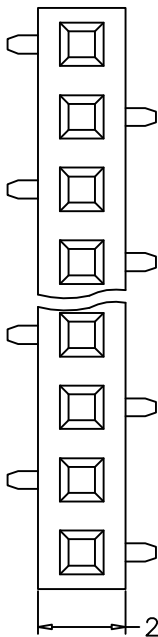
Material:

Contact Material: Phosphor Bronze
 Contact plating: Au or Sn Over Ni
 Insulator Material: PA46 (UL94V-0)

Ordering Information

BT2243 1 * * * E 3 A03

No.of Pins 02-40
 Contact Plating U=Gold Flash X=10µ"Gold W=15µ"Gold Y=20µ"Gold Z=30µ"Gold S=Tin Plated
 Insulation & Packing E=PA46, Tube
 Contact Shape 3=SMT



REV	DATE	MODIFICATION DESCRIPTION	CHANGE	APPROVE	OPERATION	DRAW	Yalin	09/01/18	SCALE	PART NO.
A0	09/01/18	NEW			X.X ±0.45	DESIGN			UNIT	BT22431***E3A03
					X.XX ±0.30	CHECK	Shine		SIZE	
					X.XXX ±0.20	APPROVE	CK		SHEET	
					Angle ± .3°				PROJ.	
					DIM TOL				TITLE:	2.0mm Pitch Single Row Female Header SMT 180° H=4.30mm

